

Panel Fabrics - Premium

To request a fabric sample call 866-800-0028
or e-mail CustomerService@TheOfficeLeader.com



Anchorage 2335

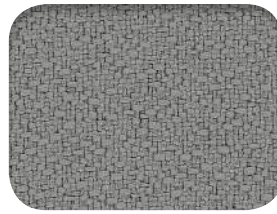
Additional Colors
Available: 30



White 2664



Sunshine 2082



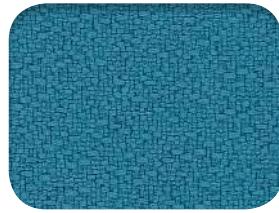
Asteroid 2053



Green Apple 2087



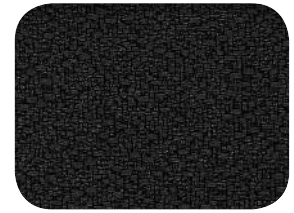
Angora 2035



Waterfall 2691



Pumpkin 2021



Onyx 2016

Bailey 2299

Additional Colors
Available: 1



Allagash Mist 7040



Baxter Beige 7011



Belmont Silver 7010



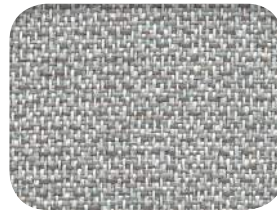
Cave 7047



Kennebec Blue 7041



Khaki 7012



Sherman Pewter 7024



Paris Frost 7020

Cape Cod 3073

Additional Colors
Available: 1



Apricot 7010



Buff 7011



Cloud 7030



Dune 7040



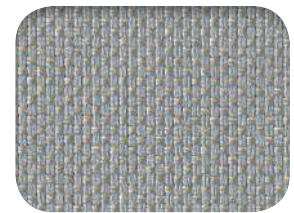
Key Lime 7050



Linen 7031



Seagull 7072



Surf 7062

Coastline 3495

Additional Colors
Available: 5



Bluff 040



Sand 020



Seal 080





Vapor 060


Panel Specifications

Style	Anchorage 2335	Bailey 2299	Cape Cod 3073	Coastline 3495
Content	35% Post-Consumer Recycled Polyester 65% Pre-Consumer Recycled Polyester	100% Recycled Polyester	24% Post-Consumer Recycled Polyester 76% Pre-Consumer Recycled Polyester	34% Post-Consumer Recycled Polyester 66% Pre-Consumer Recycled Polyester
Weight	15.0 ± 1.0 oz / lin yd	8.3 ± 0.5 oz / lin yd	12.4 ± 1.0 oz / lin yd	12.2 ± 1.0 oz / lin yd
Width	66"	66"	66"	66"
Repeat	None	None	None	16" Vertical, 16.6" Horizontal
Treatment	None	Polyester Binder	Polyester Binder	None
Cleaning Code	W-S	W-S	W-S	W-S
Cleaning Suggestions	Fabric may be cleaned with mild, water-free solvents or water-based cleaning agents or foam.	Fabric may be cleaned with mild, water-free solvents or water-based cleaning agents or foam.	Fabric may be cleaned with mild, water-free solvents or water-based cleaning agents or foam.	Fabric may be cleaned with mild, water-free solvents or water-based cleaning agents or foam.
Performance				
Breaking Strength (ASTM D5034)	Warp: 275.0 lbf min. Fill: 275.0 lbf min.	Warp: 150.0 lbf min. Fill: 100.0 lbf min.	Warp: 150.0 lbf min. Fill: 150.0 lbf min.	Warp: 220.0 lbf min. Fill: 100.0 lbf min.
Tear Strength (ASTM D2261)	Warp: 35.0 lbf min. Fill: 35.0 lbf min.	Warp: 15.0 lbf min. Fill: 15.0 lbf min.	Warp: 30.0 lbf min. Fill: 30.0 lbf min.	Warp: 25.0 lbf min. Fill: 18.0 lbf min.
Colorfastness to Light (AATCC 16 Option 3)	40 hrs. Grade 4 min.	40 hrs. Grade 4 min.	40 hrs. Grade 4 min.	40 hrs. Grade 4 min.
Colorfastness to Crocking (AATCC 8)	4.0 min. Dry 3.0 min. Wet	4.0 min. Dry 3.0 min. Wet	4.0 min. Dry 3.0 min. Wet	4.0 min. Dry 3.0 min. Wet
Flammability				
ASTM E-84	Class A or I	Class A or I	Class A or I	Class A or I

Colors may vary between dye lots. These are directional fabrics.
Application testing of these products is recommended.
Proudly woven in the USA supporting our local communities.

 These patterns are included in the underwriters laboratory panel fabric recognition program. Additional testing of these U.L. recognized component fabrics is not required on approved panels from participating manufacturers.

 Terratex is a registered trademark of True Textiles, Inc. and designates fabrics that are made from 100% recycled or compostable material using increasingly sustainable manufacturing practices to produce a high quality product that is recyclable at the end of its useful life.

 CO₂ emissions from 100% of the electricity used by the manufacturer to produce these products have been measured and offset in accordance with The CarbonNeutral Protocol.

Panel Fabrics - Premium

To request a fabric sample call 866-800-0028
or e-mail CustomerService@TheOfficeLeader.com



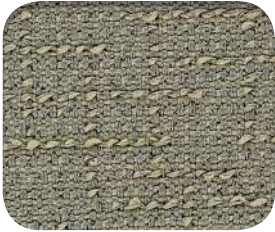
Crosstown

2526

Additional Colors
Available: 3



Buff 080



Cement 010



Chamois 050



Fieldstone 060



Mystic 020



Ray 030



Stucco 070



Waterfront 040

Drift

2539



Alabaster 020



Chamois 031



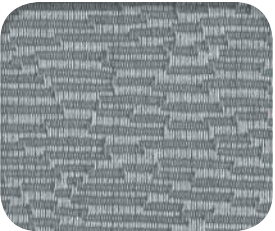
Graphite 040



Mocha 032



Pebble 010



Slate 050



Sprout 030



Storm 041

FR701®

2100

Additional Colors
Available: 51



Blue Neutral 401



Cinnabar 422



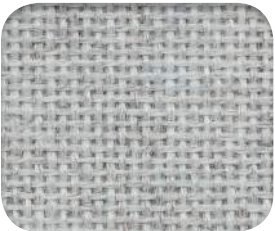
Crystal Blue 175



Quartz 380



Silver Neutral 406



Silver Papier 538



Wedgewood 150





Wheat 130


Panel Specifications

Style	Crosstown 2526	Drift 2539	FR701 [®] 2100
Content	23% Post-Consumer Recycled Polyester 77% Pre-Consumer Recycled Polyester	51% Post-Consumer Recycled Polyester 49% Pre-Consumer Recycled Polyester	100% Post-Consumer Recycled Polyester
Weight	13.6 ± 1.0 oz / lin yd	12.0 ± 1.0 oz / lin yd	16.0 ± 0.5 oz / lin yd
Width	66"	66"	66"
Repeat	12.5" Vertical, 16.2" Horizontal	9.6" Vertical, 14" Horizontal	None
Cleaning Code	W-S	W-S	W-S
Cleaning Suggestions	Fabric may be cleaned with mild, water-free solvents or water-based cleaning agents or foam.	Fabric may be cleaned with mild, water-free solvents or water-based cleaning agents or foam.	Fabric may be cleaned with mild, water-free solvents or water-based cleaning agents or foam.
Performance			
Breaking Strength (ASTM D5034)	Warp: 250.0 lbf min. Fill: 150.0 lbf min.	Warp: 250.0 lbf min. Fill: 125.0 lbf min.	Warp: 150.0 lbf min. Fill: 150.0 lbf min.
Tear Strength (ASTM D2261)	Warp: 35.0 lbf min. Fill: 25.0 lbf min.	Warp: 15.0 lbf min. Fill: 15.0 lbf min.	Warp: 30.0 lbf min. Fill: 30.0 lbf min.
Colorfastness to Light (AATCC 16 Option 3)	40 hrs. Grade 4 min.	40 hrs. Grade 4 min.	40 hrs. Grade 4 min.
Colorfastness to Crocking (AATCC 8)	4.0 min. Dry 3.0 min. Wet	4.0 min. Dry 3.0 min. Wet	4.0 min. Dry 3.0 min. Wet
Flammability			
ASTM E-84	Class A or I	Class A or I	Class A or I

Colors may vary between dye lots. These are directional fabrics except FR701[®] .
Application testing of these products is recommended.
Proudly woven in the USA supporting our local communities.

 These patterns are included in the underwriters laboratory panel fabric recognition program. Additional testing of these U.L. recognized component fabrics is not required on approved panels from participating manufacturers.

 Terratex is a registered trademark of True Textiles, Inc. and designates fabrics that are made from 100% recycled or compostable material using increasingly sustainable manufacturing practices to produce a high quality product that is recyclable at the end of its useful life.

 CO₂ emissions from 100% of the electricity used by the manufacturer to produce these products have been measured and offset in accordance with The CarbonNeutral Protocol.

Panel Fabrics - Premium

To request a fabric sample call 866-800-0028
or e-mail CustomerService@TheOfficeLeader.com

Mingle
2527



Biscuit 090



Carbon 010



Crystal 060



Green Tea 040



Khaki 020



Putty 080



Straw 030



Winter 070

Rattan
3087
Additional Colors
Available: 1



Ivory 010



Alabaster 021



Tuscan 040



Spring 070



Harvest 030



Mercury 020



Sky 051



Storm 050

Reeds
3078



Bisque 010



Maize 040



Greystone 020



Sand 041



Moss 051



Mink 050



Iron 030

Panel Specifications

Style	Mingle 2527	Rattan 3087	Reeds 3078
Content	23% Post-Consumer Recycled Polyester 77% Pre-Consumer Recycled Polyester	34% Post-Consumer Recycled Polyester 66% Pre-Consumer Recycled Polyester	74% Post-Consumer Recycled Polyester 26% Pre-Consumer Recycled Polyester
Weight	10.9 ± 1.0 oz / lin yd	14.7 ± 0.5 oz / lin yd	11.6 ± 1.0 oz / lin yd
Width	66"	66"	66"
Repeat	16.7" Vertical, 16.2" Horizontal	17.7" Vertical, 13.9" Horizontal	12.5" Vertical, 16.9" Horizontal
Cleaning Code	W-S	W-S	W-S
Cleaning Suggestions	Fabric may be cleaned with mild, water-free solvents or water-based cleaning agents or foam.	Fabric may be cleaned with mild, water-free solvents or water-based cleaning agents or foam.	Fabric may be cleaned with mild, water-free solvents or water-based cleaning agents or foam.
Performance			
Breaking Strength (ASTM D5034)	Warp: 250.0 lbf min. Fill: 100.0 lbf min.	Warp: 225.0 lbf min. Fill: 200.0 lbf min.	Warp: 250.0 lbf min. Fill: 150.0 lbf min.
Tear Strength (ASTM D2261)	Warp: 25.0 lbf min. Fill: 15.0 lbf min.	Warp: 35.0 lbf min. Fill: 35.0 lbf min.	Warp: 20.0 lbf min. Fill: 20.0 lbf min.
Colorfastness to Light (AATCC 16 Option 3)	40 hrs. Grade 4 min.	40 hrs. Grade 4 min.	40 hrs. Grade 4 min.
Colorfastness to Crocking (AATCC 8)	4.0 min. Dry 3.0 min. Wet	4.0 min. Dry 3.0 min. Wet	4.0 min. Dry 3.0 min. Wet
Flammability			
ASTM E-84	Class A or I	Class A or I	Class A or I

Colors may vary between dye lots. These are directional fabrics.
Application testing of these products is recommended.
Proudly woven in the USA supporting our local communities.



These patterns are included in the underwriters laboratory panel fabric recognition program. Additional testing of these U.L. recognized component fabrics is not required on approved panels from participating manufacturers.



Terratex is a registered trademark of True Textiles, Inc. and designates fabrics that are made from 100% recycled or compostable material using increasingly sustainable manufacturing practices to produce a high quality product that is recyclable at the end of its useful life.



CO₂ emissions from 100% of the electricity used by the manufacturer to produce these products have been measured and offset in accordance with The CarbonNeutral Protocol.

Panel Fabrics - Premium

To request a fabric sample call 866-800-0028
or e-mail CustomerService@TheOfficeLeader.com



Spinel

3582

Additional Colors
Available: 3



Amber 113



Guilden 070



Obsidian 021



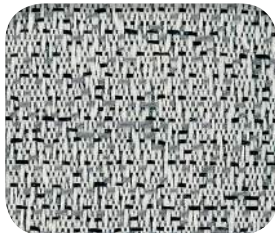
Opal 011



Patina 013



Perlite 080



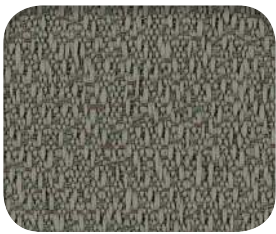
Petoskey 056



Quarry 091



Sandstone 050



Smoky Quartz 031



Tiger Eye 030



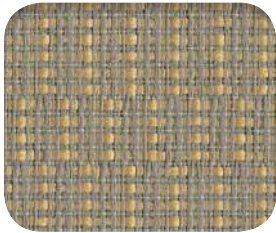
Yellowstone 112

Sprite

2671



Butter 7020



Harvest 7032

C



Khaki 7030

C



Kiwi 7031

C

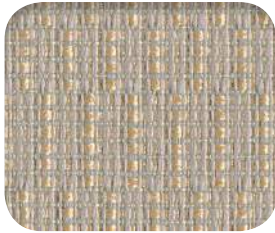


Linen 7010

C



Powder 7011



Sherbet 7012



Sky 7033



Snow 7040

C Sustainable BASIC program option. Eligible for increased savings when used with BASIC finishes.

Panel Specifications

Style	Spinel 3582	Sprite 2671
Content	32% Post-Consumer Recycled Polyester 68% Pre-Consumer Recycled Polyester	5% Post-Consumer Recycled Polyester 95% Pre-Consumer Recycled Polyester
Weight	11.8 ± 1.0 oz / lin yd	10.8 ± 0.5 oz / lin yd
Width	66"	66"
Repeat	16.5" Vertical and Horizontal	.83" Vertical, .26" Horizontal
Treatment	None	Polyester Binder
Cleaning Code	W-S	W-S
Cleaning Suggestions	Fabric may be cleaned with mild, water-free solvents or water-based cleaning agents or foam.	Fabric may be cleaned with mild, water-free solvents or water-based cleaning agents or foam.
Performance		
Breaking Strength (ASTM D5034)	Warp: 220.0 lbf min. Fill: 90.0 lbf min.	Warp: 175.0 lbf min. Fill: 175.0 lbf min.
Tear Strength (ASTM D2261)	Warp: 18.0 lbf min. Fill: 18.0 lbf min.	Warp: 35.0 lbf min. Fill: 25.0 lbf min.
Colorfastness to Light (AATCC 16 Option 3)	40 hrs. Grade 4 min.	40 hrs. Grade 4 min.
Colorfastness to Crocking (AATCC 8)	4.0 min. Dry 3.0 min. Wet	4.0 min. Dry 3.0 min. Wet
Flammability		
ASTM E-84	Class A or I	Class A or I

Colors may vary between dye lots. These are directional fabrics.
Application testing of these products is recommended.
Proudly woven in the USA supporting our local communities.



These patterns are included in the underwriters laboratory panel fabric recognition program. Additional testing of these U.L. recognized component fabrics is not required on approved panels from participating manufacturers.



Terratex is a registered trademark of True Textiles, Inc. and designates fabrics that are made from 100% recycled or compostable material using increasingly sustainable manufacturing practices to produce a high quality product that is recyclable at the end of its useful life.



CO₂ emissions from 100% of the electricity used by the manufacturer to produce these products have been measured and offset in accordance with The CarbonNeutral Protocol.

Panel Fabrics - Premium

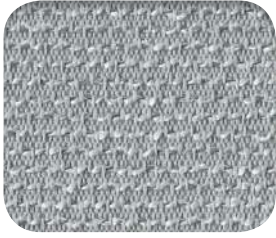
To request a fabric sample call 866-800-0028
or e-mail CustomerService@TheOfficeLeader.com



Strata 2968



Cement 060 **C**



Cloud 040 **C**



Latte 031



Linen 010



Sand 030 **C**



Sea 070

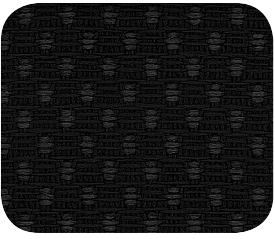


Sky 050 **C**

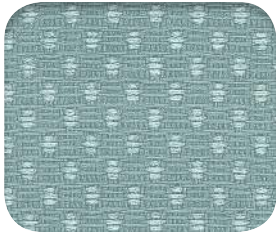


Straw 020

Streetwise 2721



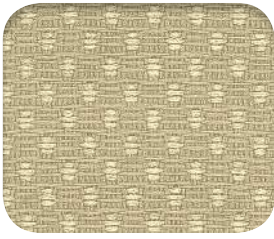
Asphalt 718



Commuter 1887



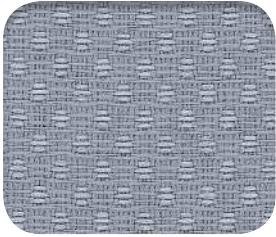
Crosswalk 1901



Doughnut Shop 1882



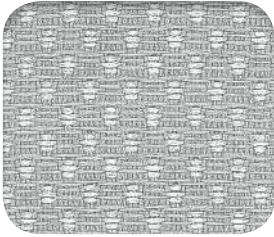
Hydrant 1883



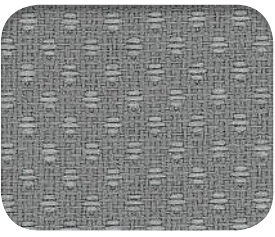
Light Rail 1885



Mailbox 1890



News Stand 1884



Parking Meter 1886



Pavement 1894



Pedestrian 1892



Pigeon 1893



Stop Sign 1891



Taxi 1881

C Sustainable BASIC program option. Eligible for increased savings when used with BASIC finishes.

Panel Specifications

Style	Strata 2968	Streetwise 2721
Content	100% Recycled Polyester	22% Post-Consumer Recycled Polyester 78% Pre-Consumer Recycled Polyester
Weight	11.8 ± 1.0 oz / lin yd	13.0 ± 1.0 oz / lin yd
Width	66"	66"
Repeat	.1" Vertical, None Horizontal	None
Cleaning Code	W-S	W-S
Cleaning Suggestions	Fabric may be cleaned with mild, water-free solvents or water-based cleaning agents or foam.	Fabric may be cleaned with mild, water-free solvents or water-based cleaning agents or foam.
Performance		
Breaking Strength (ASTM D5034)	Warp: 200.0 lbf min. Fill: 100.0 lbf min.	Warp: 220.0 lbf min. Fill: 180.0 lbf min.
Tear Strength (ASTM D2261)	Warp: 20.0 lbf min. Fill: 20.0 lbf min.	Warp: 30.0 lbf min. Fill: 25.0 lbf min.
Colorfastness to Light (AATCC 16 Option 3)	40 hrs. Grade 4 min.	40 hrs. Grade 4 min.
Colorfastness to Crocking (AATCC 8)	4.0 min. Dry 3.0 min. Wet	4.0 min. Dry 3.0 min. Wet
Flammability		
ASTM E-84	Class A or I	Class A or I

Colors may vary between dye lots. These are directional fabrics.
Application testing of these products is recommended.
Proudly woven in the USA supporting our local communities.



These patterns are included in the underwriters laboratory panel fabric recognition program. Additional testing of these U.L. recognized component fabrics is not required on approved panels from participating manufacturers.



Terratex is a registered trademark of True Textiles, Inc. and designates fabrics that are made from 100% recycled or compostable material using increasingly sustainable manufacturing practices to produce a high quality product that is recyclable at the end of its useful life.



CO₂ emissions from 100% of the electricity used by the manufacturer to produce these products have been measured and offset in accordance with The CarbonNeutral Protocol.

Panel Fabrics - Premium

To request a fabric sample call 866-800-0028
or e-mail CustomerService@TheOfficeLeader.com



Century



Amber 7177



Aspen 7176

C



Atlantic 7180

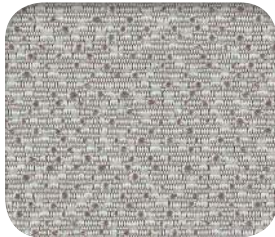
C



Dew 7178



Driftwood 7181



Fossil 7179

C



Limestone 7183



Oro 7182

C

Columbus

Additional Colors
Available: 3



Khaki 7919*



Midnight 7925*

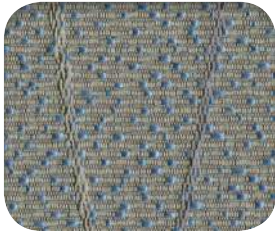


Silver 7922*



Stone 7923*

Comet



Nightshadow 7918



Overcast 7916

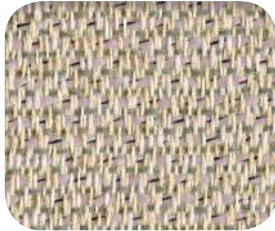


Sandshell 7915

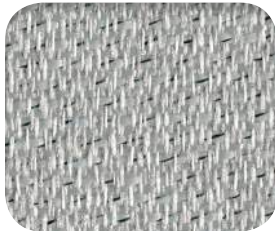


Taupe 7917

Dayton



Blush 7116



Fog 7113



Golden 7117



Honey 7118



Ocean 7114



Silver 7112



Straw 7115


C Sustainable BASIC program option. Eligible for increased savings when used with BASIC finishes.


* Fabric is railroaded as shown, except when used in conjunction with 85" monolithic panels or larger.

Panel Specifications

Style	Century	Columbus	Comet	Dayton
Content	100% Polyester	100% Polyester	100% Polyester	100% Polyester
Weight	12.6 oz / lin yd	11.0 oz / lin yd	11.68 oz / lin yd	11.2 oz / lin yd
Width	66"	66"	66"	66"
Repeat	N/A	N/A	16.125" V 16.875" H	N/A
Cleaning Code	W-S	W-S	W-S	W-S
Cleaning Suggestions	Fabric may be cleaned with mild, water-free solvents or water-based cleaning agents or foam.	Fabric may be cleaned with mild, water-free solvents or water-based cleaning agents or foam.	Fabric may be cleaned with mild, water-free solvents or water-based cleaning agents or foam.	Fabric may be cleaned with mild, water-free solvents or water-based cleaning agents or foam.
Performance				
Breaking Strength (ASTM D5034)	Warp: 249.0 lbs. Fill: 248.0 lbs.	Warp: 123.0 lbs. Fill: 130.0 lbs.	Warp: 217.0 lbs. Fill: 157.0 lbs.	Warp: 90.0 lbs. Fill: 110.0 lbs.
Tear Strength (ASTM D2261)	Warp: 23.3 lbs. Fill: 30.2 lbs.	Warp: 24.6 lbs. Fill: 22.8 lbs.	Not Tested	Warp: 33.9 lbs. Fill: 31.7 lbs.
Colorfastness to Light (AATCC 16 Option 3)	40 hrs. Class 4.5	40 hrs. Class 5	40 hrs. Class 4	40 hrs. Class 4.5
Colorfastness to Crocking (AATCC 8)	4.5 Dry, 5.0 Wet	5.0 Dry, 5.0 Wet	5.0 Dry, 5.0 Wet	4.5 Dry, 4.0 Wet
Flammability				
ASTM E-84	Class A or 1	Class A or 1	Class A or 1	Class A or 1
Cal. Tech. Bulletin 117 Sec. E Part 1 (CS191-53)	Pass	Pass	Pass	Pass

Colors may vary between dye lots. These are directional fabrics. Application testing of these products is recommended.

 Century, Columbus, Comet and Dayton are directional fabrics. Please use caution when cutting and applying.

 Century, Columbus, Comet and Dayton are included in the underwriters laboratory panel fabric recognition program. Additional testing of these U.L. recognized component fabrics are not required on approved panels from participating manufacturers.

Panel Fabrics - Premium

To request a fabric sample call 866-800-0028
or e-mail CustomerService@TheOfficeLeader.com

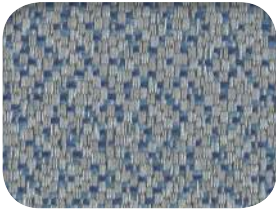


Midway

Additional Colors
Available: 6



Chambray 7244



Oasis 7243



Opal 7240

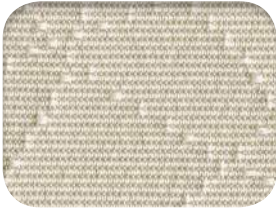


Wheat 7239

Milkyway



Brindle 7905



Egg Shell 7903



Sea Spray 7906



Straw 7904

Starburst



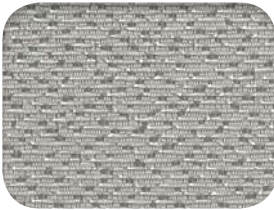
Cosmic 7913



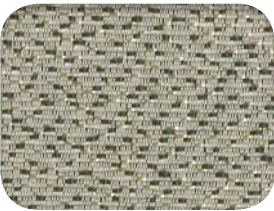
Crème Brulee 7907



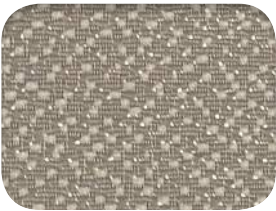
Depth 7914



Mica 7912



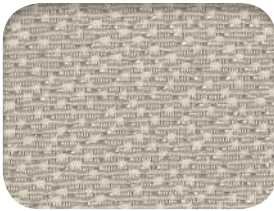
Seneca 7910



Taupe 7911



Wheat 7909



Whitecap 7908

Traction



Chrome 7759



Greystone 7758



Jute 7754



Platinum 7753

Zenith



Gravel 7034



Raindrop 7031



Sandstone 7030




Straw 7033




Taupe 7032


Panel Specifications


Style	Midway	Milkyway	Starburst	Traction*	Zenith 
Content	100% Polyester	100% Polyester	100% Polyester	100% Polyester	100% Post Consumer Recycled Polyester
Weight	10.65 oz / lin yd	11.52 oz / lin yd	11.68 oz / lin yd	11.7 oz / lin yd	14.3 oz / lin yd
Width	66"	66"	66"	66"	66"
Repeat	N/A	1.875" V 1.75" H	3.5" V 3.25" H	N/A	13.74" V 15.1" H
Cleaning Code	W-S	W-S	W-S	W-S	W-S
Cleaning Suggestions	Fabric may be cleaned with mild, water-free solvents or water-based cleaning agents or foam.	Fabric may be cleaned with mild, water-free solvents or water-based cleaning agents or foam.	Fabric may be cleaned with mild, water-free solvents or water-based cleaning agents or foam.	Fabric may be cleaned with mild, water-free solvents or water-based cleaning agents or foam.	Fabric may be cleaned with mild, water-free solvents or water-based cleaning agents or foam.
Performance					
Breaking Strength (ASTM D5034)	Warp: 212.0 lbs. Fill: 151.0 lbs.	Warp: 163.0 lbs. Fill: 233.0 lbs.	Warp: 137.0 lbs. Fill: 190.0 lbs.	Warp: 281.0 lbs. Fill: 181.0 lbs.	Warp: 231.0 lbs. Fill: 175.0 lbs.
Tear Strength (ASTM D2261)	Warp: 37.5 lbs. Fill: 61.3 lbs.	Not Tested	Not Tested	Warp: 29.7 lbs. Fill: 31.4 lbs.	Warp: 32.9 lbs. Fill: 43.8 lbs.
Colorfastness to Light (AATCC 16 Option 3)	40 hrs. Class 4	40 hrs. Class 4.5	40 hrs. Class 4	40 hrs. Class 5	60 hrs. Class 5
Colorfastness to Crocking (AATCC 8)	4.5 Dry, 4.5 Wet	5.0 Dry, 5.0 Wet	5.0 Dry, 5.0 Wet	5.0 Dry, 5.0 Wet	5.0 Dry, 5.0 Wet
Flammability					
ASTM E-84	Class A or 1	Class A or 1	Class A or 1	Class A or 1	Class A or 1
Cal. Tech. Bulletin 117 Sec. E Part 1 (CS191-53)	Pass	Pass	Pass	Pass	Pass

Colors may vary between dye lots. These are directional fabrics. Application testing of these products is recommended.

* Traction is lightly backed.

 Zenith is part of the Earth Friendly Collection.
The Earth Friendly Collection provides fabric options for reducing a negative impact on the environment.

 Midway, Milkyway, Starburst, Traction and Zenith are directional fabrics. Please use caution when cutting and applying.

 Midway, Milkyway, Starburst, Traction and Zenith are included in the underwriters laboratory panel fabric recognition program.
Additional testing of these U.L. recognized component fabrics are not required on approved panels from participating manufacturers.

Panel Fabrics - Premium

To request a fabric sample call 866-800-0028
or e-mail CustomerService@TheOfficeLeader.com



Nexus 159



Earth 000



Fog 016



Khaki 007



Mesa 009



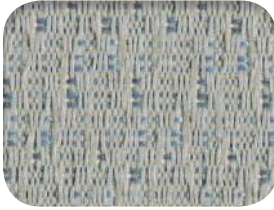
Pewter 006



Pistachio 003



Sandstone 010



Sky 004

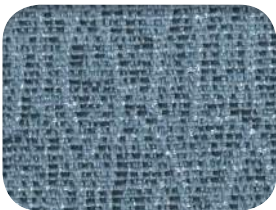


Vanilla 017

Zest 155



Fog 016



Harbor 014



Harvest 000



Meadow 003



Quartz 007



Sky 004



Spice 009




Zinc 006




Panel Specifications

Style	Nexus	Zest
Content	50% Pre-Consumer Recycled Polyester 50% Post-Consumer Recycled Polyester	100% Pre-Consumer Recycled Polyester
Weight	10.4 oz / lin yd	10.4 oz / lin yd
Width	66"	66"
Repeat	1.454" Vertical and Horizontal Non-Matching	12.25" Vertical, 14.125" Horizontal Non-Matching
Cleaning Code	W-S	W-S
Cleaning Suggestions	Water/Solvent Cleaner - Spot clean, with a mild solvent, an upholstery shampoo, or the foam from a mild detergent. When using a solvent or dry cleaning product, follow instructions carefully and clean only in a well-ventilated room. Avoid any product that contains carbon tetrachloride or other toxic materials. With either method, pretest a small area before proceeding. Prompt cleaning is always recommended.	Water/Solvent Cleaner - Spot clean, with a mild solvent, an upholstery shampoo, or the foam from a mild detergent. When using a solvent or dry cleaning product, follow instructions carefully and clean only in a well-ventilated room. Avoid any product that contains carbon tetrachloride or other toxic materials. With either method, pretest a small area before proceeding. Prompt cleaning is always recommended.
Performance		
Breaking Strength (ASTM D5034)	Warp: 100.0 lbs. Fill: 94.0 lbs.	Warp: 266.0 lbs. Fill: 203.0 lbs.
Tear Strength (ASTM D2261)	Warp: 33.0 lbs. Fill: 25.0 lbs.	Not Tested
Colorfastness to Light (AATCC 16 Option 3)	40 hrs.	60 hrs.
Colorfastness to Crocking (AATCC 8)	3.0 Dry 4.0 Wet	4.0 Dry 3.5 Wet
Flammability		
ASTM E-84	Class A or I	Class A or I
Cal. Tech. Bulletin 117	Pass	Pass
NFPA 260 (Equiv. to UFAC)	Class I	Class I

Colors may vary between dye lots. These are directional fabrics. Application testing of these products is recommended.

 [®] Nexus and Zest are included in the underwriters laboratory panel fabric recognition program. Additional testing of these U.L. recognized component fabrics are not required on approved panels from participating manufacturers.

 Nexus and Zest are directional fabrics. Please use caution when cutting and applying.

Fabrics and Finishes - Basic

To request a finish sample call 866-800-0028
or e-mail CustomerService@TheOfficeLeader.com



Fabrics



Century Aspen 7176



Century Oro 7182



Century Fossil 7179



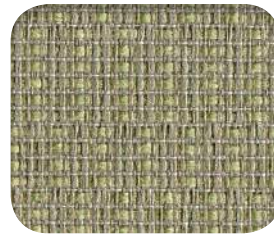
Century Atlantic 7180



Sprite Harvest 032



Sprite Khaki 030



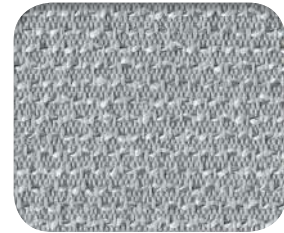
Sprite Kiwi 031



Sprite Linen 010



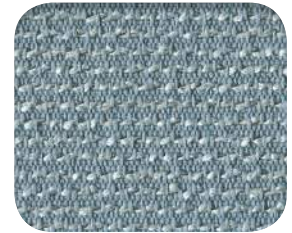
Strata Cement 060



Strata Cloud 040



Strata Sand 030



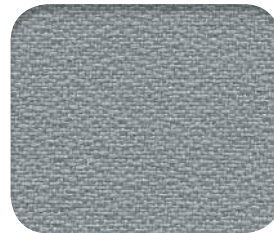
Strata Sky 050



Traction Earth 7757



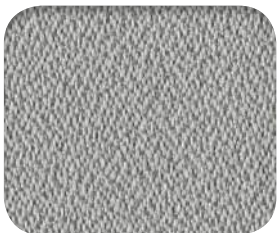
Traction Wheat 7756



TOL EPS Grey Sky **Q**



TOL EPS Pebble Creek **Q**



TOL EPS Cinder **Q**



TOL EPS Sand **Q**



TOL EPS Breeze



TOL EPS Shell



TOL EPS Surfside



TOL EPS Willow



TOL EPS Drew Cove



TOL EPS Rylan Reef

BASIC Fabrics are import fabrics and subject to minor imperfections.


Q Eligible for Quick Ship when combined with Quick Ship options and finishes.

Panel Specifications

Style	Century	Sprite*	Strata*	Traction	PEBLO EPS Grey Sky/Pebble Creek/ Cinder/Sand	PEBLO EPS Breeze/Shell/Surfside/ Willow	PEBLO EPS Drew Cove/Rylan Reef
Content	100% Polyester	5% Post-Consumer Recycled Polyester 95% Pre-Consumer Recycled Polyester	100% Recycled Polyester	100% Polyester	100% Polyester	100% Polyester	100% Polyester
Weight	12.6 oz / lin yd	10.8 ± 0.5 oz / lin yd	11.8 ± 1.0 oz / lin yd	11.7 oz / lin yd	6151 kg	153 g / sq m	6151 kg
Width	66"	66"	66"	66"	60/66"	60/66"	60/66"
Cleaning Code	W-S	W-S	W-S	W-S	W-S	W-S	W-S
Cleaning Suggestions	Fabric may be cleaned with mild, water-free solvents or water-based cleaning agents or foam.	Fabric may be cleaned with mild, water-free solvents or water-based cleaning agents or foam.	Fabric may be cleaned with mild, water-free solvents or water-based cleaning agents or foam.	Fabric may be cleaned with mild, water-free solvents or water-based cleaning agents or foam.	Fabric may be cleaned with mild, water-free solvents or water-based cleaning agents or foam.	Fabric may be cleaned with mild, water-free solvents or water-based cleaning agents or foam.	Fabric may be cleaned with mild, water-free solvents or water-based cleaning agents or foam.
Performance							
Breaking Strength (ASTM D5034)	Warp: 249.0 lbs. Fill: 248.0 lbs.	Warp: 175.0 lbf min. Fill: 175.0 lbf min.	Warp: 200.0 lbf min. Fill: 100.0 lbf min.	Warp: 281.0 lbs. Fill: 181.0 lbs.	Warp: 71.9-106.7 lbs. min. Fill: 77.5-94.6 lbs. min.	Warp: 312.0 min. Fill: 108.8 min.	Warp: 312.0 min. Fill: 108.8 min.
Tear Strength (ASTM D2261)	Warp: 23.3 lbs. Fill: 30.2 lbs.	Warp: 35.0 lbf min. Fill: 25.0 lbf min.	Warp: 20.0 lbf min. Fill: 20.0 lbf min.	Warp: 29.7 lbs. Fill: 31.4 lbs.	Warp: 9.7-106.7 lbs. min. Fill: 77.5-94.6 lbs. min.	Warp: 85.0 min. Fill: 36.0 min.	Warp: 85.0 min. Fill: 36.0 min.
Colorfastness to Light (AATCC 16 Option 3)	40 hrs. Class 4.5	40 hrs. Grade 4 min.	40 hrs. Grade 4 min.	40 hrs. Class 5	40 hrs. min.	40 hrs. min.	40 hrs. min.
Colorfastness to Crocking (AATCC 8)	4.5 Dry, 5.0 Wet	4.0 min. Dry, 3.0 min. Wet	4.0 min. Dry, 3.0 min. Wet	5.0 Dry, 5.0 Wet	4-5 Dry, 4-5 Wet	4-5 Dry, 4-5 Wet	4-5 Dry, 4-5 Wet
Flammability							
ASTM E-84	Class A or 1	Class A or 1	Class A or 1	Class A or 1	Engineered to Pass	Engineered to Pass	Engineered to Pass
Cal. Tech. Bulletin 117 Sec. E Part 1 (CS191-53)	Pass	Pass	Pass	Pass	Engineered to Pass	Engineered to Pass	Engineered to Pass

Colors may vary between dye lots. These are directional fabrics. Application testing of these products is recommended.

Traction is lightly backed. Sprite is treated with a polyester binder.

 Century, TOL Fabrics, Sprite, Strata and Traction are included in the underwriters laboratory panel fabric recognition program. Additional testing of these U.L. recognized component fabrics are not required on approved panels from participating manufacturers.

* Terratex is a registered trademark of True Textiles, Inc. and designates fabrics that are made from 100% recycled or compostable material using increasingly sustainable manufacturing practices to produce a high quality product that is recyclable at the end of its useful life.

 CO₂ emissions from 100% of the electricity used by the manufacturer to produce these products have been measured and offset in accordance with the CarbonNeutral Protocol.

Fabrics and Finishes - Basic

To request a finish sample call 866-800-0028
or e-mail CustomerService@TheOfficeLeader.com



Fabrics
(cont.)



TOL EPS Dylan Dunes



Brown's Island Q



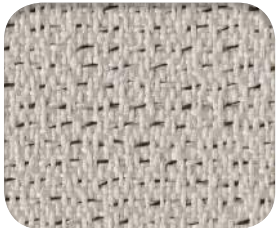
Canal Walk Q



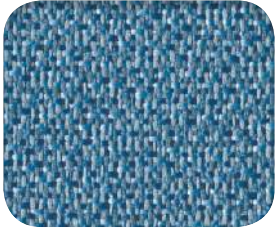
Carytown



Church Hill



Colonial Downs



James River

Base



BU Q



MT Q

Trim



BU Q



HF



MT Q

Work
Surfaces



Folkstone Grey Q



Hardrock Maple Q



Antique White Q

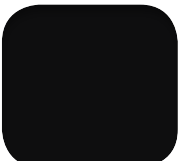


White Nebula Q

Edge
Banding



Antique White Q



BU Q



Folkstone Grey



Hardrock Maple Q



HF




MT Q

BASIC Fabrics are import fabrics and subject to minor imperfections.
Q Eligible for Quick Ship when combined with Quick Ship options and finishes.

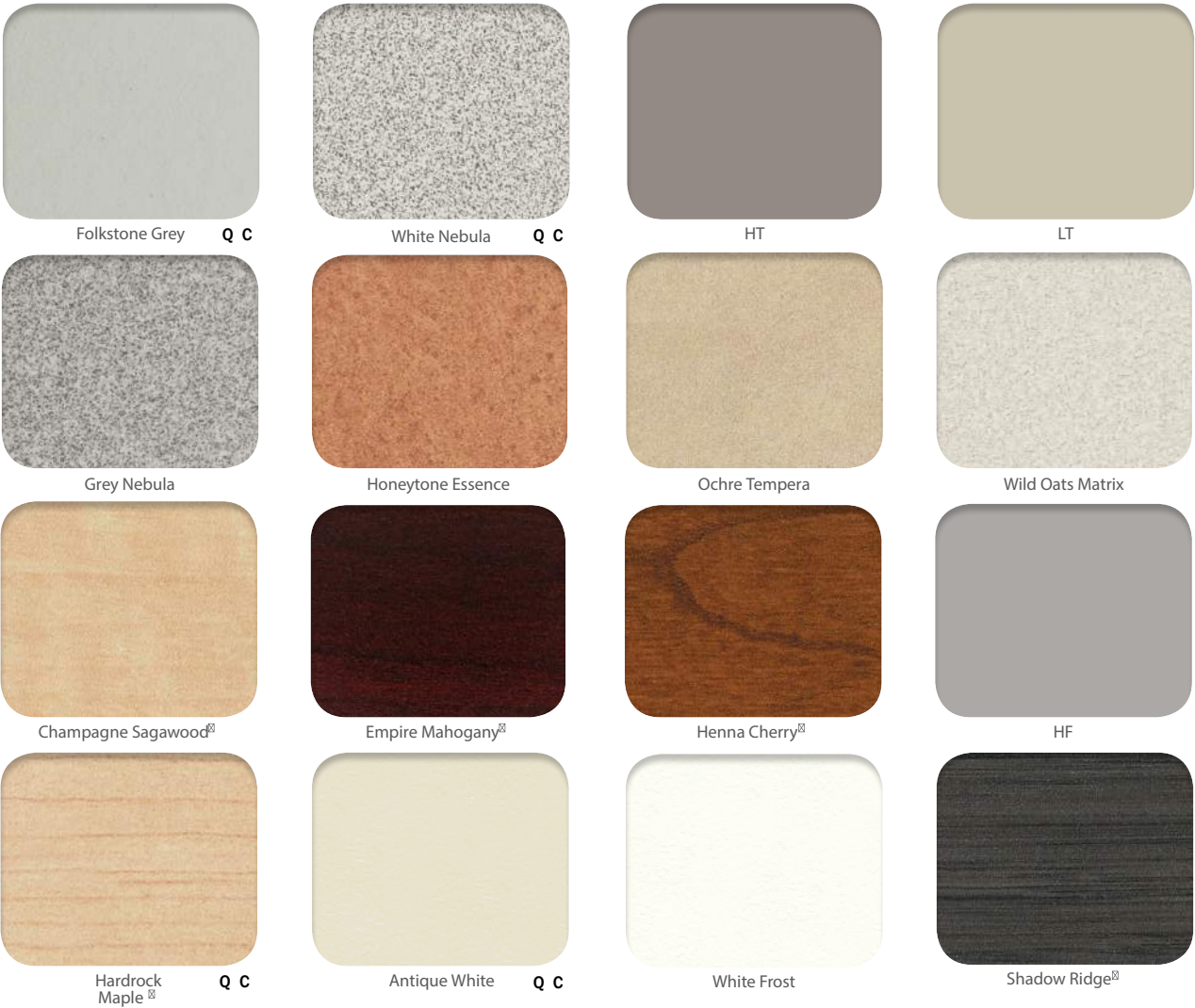
Panel Specifications

Style	PEBLO EPS Dylan Dunes	Basic Brown's Island, Canal Walk, Carytown, Church Hill, Colonial Downs, James River
Content	100% Polyester	100% Polyester
Weight	6151 kg	6151 kg
Width	60/66"	60" ± 2%
Cleaning Code	W-S	W-S
Cleaning Suggestions	Fabric may be cleaned with mild, water-free solvents or water-based cleaning agents or foam.	Fabric may be cleaned with mild, water-free solvents or water-based cleaning agents or foam.
Performance		
Breaking Strength (ASTM D5034)	Warp: 312.0 min. Fill: 108.8 min.	Warp: 71.9-106.7 lbs. min. Fill: 77.5-94.6 lbs. min.
Tear Strength (ASTM D2261)	Warp: 85.0 min. Fill: 36.0 min.	Warp: 9.7-14.2 lbs. min. Fill: 12.6-15.7 lbs. min.
Colorfastness to Light (AATCC 16 Option 3)	40 hrs. min.	40 hrs. min.
Colorfastness to Crocking (AATCC 8)	4-5 Dry 4-5 Wet	4-5 Dry 4-5 Wet
Flammability		
ASTM E-84	Engineered to Pass	Not Tested
Cal. Tech. Bulletin 117 Sec. E Part 1 (CS191-53)	Engineered to Pass	Pass

Colors may vary between dye lots. These are directional fabrics. Application testing of these products is recommended.

 [®] BASIC Fabrics are included in the underwriters laboratory panel fabric recognition program.
Additional testing of these U.L. recognized component fabrics are not required on approved panels from participating manufacturers.

**Work
Surfaces**



**Edge
Banding**



All work surfaces are eligible for the Signature Program.

- Q** Eligible for Quick Ship when combined with Quick Ship options and finishes.
- C** Sustainable BASIC program option. Eligible for increased savings when used with BASIC finishes.
- ☒** Finish is available as a laminate for TOL EPS Tile at no additional charge, and TOL EPS Panel at an up-charge. Contact Customer Service for pricing details.
- ☒** Work Surface is grained.



Trim and Base

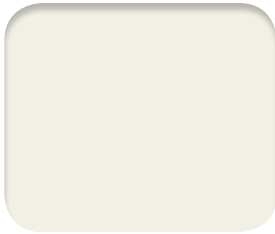
Trim



BU Q C



MT Q C



WF



LT



HF C



JT

Base



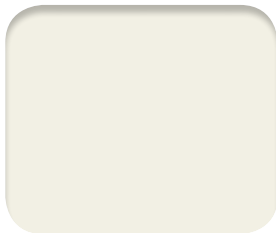
BU Q C



MT Q C



HF



WF

All work surfaces are eligible for the Signature Program.

- Q Eligible for Quick Ship when combined with Quick Ship options and finishes.
- C Sustainable BASIC program option. Eligible for increased savings when used with BASIC finishes.
- ☒ Finish is available as a laminate for TOL EPS Tile at no additional charge, and TOL EPS Panel at an up-charge. Contact Customer Service for pricing details.
- ☒ Work Surface is grained.

